



H SERIES

COMPACT SINGLE TABLE FIBER LASER CUTTING MACHINE

H SERIES



CRAFTSMANSHIP



XT Laser has the technology of flying cutting and cutting stainless steel with compressed air, which can reduce the cutting cost and improve the cutting efficiency.

STABLE PERFORMANCE



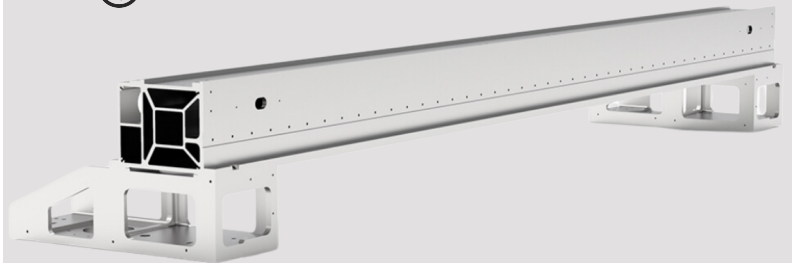
H series optical fiber cutting machine tools give full play to the advantages of optical fiber transmission. The laser is directly transmitted from the laser to the cutting head of the machine tool through the optical fiber

LOW COST AND HIGH EFFICIENCY



H series products are models in the metal material processing industry, with fast cutting ability, fast cutting speed, low operating cost, and good stable processing ability; using computer programming, high material utilization rate, saving processing costs and production costs, Also save a lot of labor.

- ✔ More than 1530 Size
- ✔ Extruded Aviation Aluminium Beam
- ✔ Autofocus Laser Head, Active Prevention
- ✔ Intelligent CNC System
- ✔ Aerospace aluminum gantry

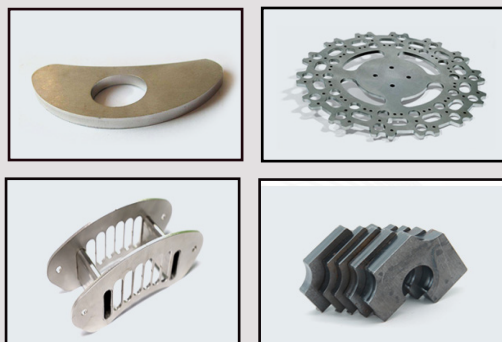


CUTTING ABILITY REFERENCE TABLE

Laser power	5mm	10mm	15mm	20mm	25mm	30mm	40mm	50mm	60mm	70mm	80mm	90mm	100mm
2000W	Carbon steel Stainless steel Aluminum Brass												
3000W	Carbon steel Stainless steel Aluminum Brass												
4000W	Carbon steel Stainless steel Aluminum Brass												
6000W	Carbon steel Stainless steel Aluminum Brass												
8000W	Carbon steel Stainless steel Aluminum Brass												
12000W	Carbon steel Stainless steel Aluminum Brass												
15000W	Carbon steel Stainless steel Aluminum Brass												
20000W	Carbon steel Stainless steel Aluminum Brass												
30000W	Carbon steel Stainless steel Aluminum Brass												

The cutting parameter is only for reference.

CUTTING SAMPLES



H SERIES

COMPACT SINGLE TABLE

FIBER LASER CUTTING MACHINE



TECHNICAL SPECIFICATIONS

MODEL	XT-H1530	XT-H1545	XT-H2040	XT-H2060	XT-H2560
CUTTING RANGE	1500X3000m	1500X4500m	2000X4000m	2000X6000m	2500X6000m
LASER POWER	1000W-4000mm	1000W-4000mm	1000W-4000mm	1000W-4000mm	1000W-4000mm
LINKAGE SPEED	120m/min	120m/min	120m/min	120m/min	120m/min
ACCELERATION	1.0G	1.0G	1.0G	1.0G	1.0G
POSITIONAL ACCURACY	±0.03mm	±0.03mm	±0.03mm	±0.03mm	±0.03mm
RE-POSITIONAL ACCURACY	±0.02mm	±0.02mm	±0.02mm	±0.02mm	±0.02mm

Technical specifications are subject to change without prior notice.

LASER CUTTING PARAMETERS REFERENCE TABLE

Material	Thickness	2000W	3000W	4000W	6000W	8000W	12000W	15000W	20000W	30000W
		Cutting Speed (m/min)								
Carbon Steel (Oxygen)	1	24-30	30-40	33-43	35-44	40-50	60-75	60-80	65-85	70-90
	2	4.7-6.5	4.8-7.5	15-25	20-28.0	26-33	28-40	45-70	50-75	60-80
	3	3.0-4.8	3.3-5.0	7.0-12	13-17	15-19	18-30	38-50	45-65	50-75
	4	2.8-3.5	3.0-4.2	3.0-4.0	3.0-4.5	3.0-4.5	3.5-5.5	3.5-5.5	5-7.0	6.5-9.0
	5	2.2-3.0	2.6-3.5	2.7-3.6	3.0-4.2	3.0-4.2	3.3-4.8	3.3-4.8	5.3-6.5	6.5-10
	6	1.8-2.6	2.3-3.2	2.5-3.4	2.5-3.5	2.6-3.7	3.0-4.2	3.0-4.2	4.0-5.5	6.0-9.0
	8	1.2-1.8	1.8-2.6	2.0-3.0	2.2-3.2	2.3-3.5	2.5-3.5	2.5-3.5	3.5-5.0	5.5-8.5
	10	1.1-1.3	1.2-2.0	1.5-2.4	1.8-2.5	2-2.5	2.2-2.7	2.2-2.7	3.5-4.7	5.0-8.0
	12	0.9-1.2	1.0-1.6	1.2-1.8	1.2-2.0	1.2-2.1	1.2-2.1	1.2-2.1	2.0-4.0	4.0-7.3
	14	0.7-0.8	0.9-1.4	0.9-1.2	1.2-1.8	1.2-1.9	1.7-1.9	1.5-1.9	1.7-3.0	3.7-6.0
	18	0.4-0.6	0.6-0.8	0.6-0.9	0.8-0.9	0.8-1.5	1.0-1.8	1.6-2.2	1.5-2.3	3.3-5.0
	20	0.2-0.4	0.5-0.8	0.5-0.8	0.5-0.8	0.6-1.3	0.6-1.5	1.5-2.0	1.5-2.3	2.3-4.0
	25	--	0.2-0.5	0.3-0.5	0.3-0.55	0.3-0.7	0.5-1.1	0.8-1.5	1.0-1.5	2.0-3.5
	30	--	--	--	0.2-0.5	0.2-0.7	0.3-0.9	0.8-1.0	0.8-1.1	1.5-2.5
	40	--	--	--	--	0.2-0.6	0.4-0.8	0.6-1.0	0.6-1.0	1.2-2.0
	50	--	--	--	--	--	0.2-0.6	0.5-0.8	0.6-1.7	--
	60	--	--	--	--	--	0.2-0.5	0.4-0.7	0.5-1.5	--
	70	--	--	--	--	--	--	0.3-0.5	0.4-0.7	--
	80	--	--	--	--	--	--	--	--	0.2-0.5
90	--	--	--	--	--	--	--	--	0.2-0.4	
Stainless steel (Nitrogen)	1	24-36	30-35	32-45	42-52	50-65	60-72	70-85	72-100	80-105
	2	6-10	13-21	16-28	20-33	30-40	35-45	40-66	45-70	55-80
	3	2.2-3.5	6.0-10	7.0-15	15-22	18-27	20-30	35-45	38-50	45-70
	4	1.2-1.6	4.0-6.0	5.0-8.0	10-15	12-16	15-22	20-32	25-35	38-65
	5	0.6-0.75	3.0-5.0	3.5-5.0	8.0-12	10-15	10-18	12-15	20-30	30-63
	6	0.6-0.7	2.0-4.0	2.5-4.5	4.8-8.0	6.0-10.0	8-12	12-15	15.0-25.0	25-53
	8	0.5-0.6	1.5-2.0	1.2-2.0	3.0-4.0	3.5-5.0	5.0-7.5	8-12	8.0-12.0	20-45
	10	0.4-0.5	0.6-0.8	0.8-1.2	1.8-2.5	2.0-2.7	3.0-7.0	6.0-8.0	6.0-10.0	20-32
	12	--	0.4-0.6	0.5-0.8	0.8-1.5	1.2-2.0	2.5-3.9	4.0-5.5	4.0-6.0	15-25
	14	--	--	0.4-0.6	0.8-0.8	1.2-1.8	1.8-2.8	3.0-5.0	3.5-6.0	13-20
	18	--	--	--	0.4-0.6	0.8-1.2	1.2-1.8	1.2-2.0	1.2-2.2	8.0-12.0
	20	--	--	--	0.3-0.5	0.4-0.7	0.9-1.5	1.0-1.6	1.3-1.8	6.0-8.0
	25	--	--	--	0.2-0.4	0.3-0.5	0.6-1.7	0.8-0.8	0.6-1.2	4.0-5.5
	30	--	--	--	0.2-0.4	0.2-0.4	0.3-0.6	0.3-0.6	0.5-1.0	2.5-3.9
	40	--	--	--	--	0.3-0.5	0.3-0.5	0.3-0.5	0.3-0.6	1.8-2.8
	50	--	--	--	--	0.3-0.4	0.2-0.4	0.2-0.5	0.2-0.5	1.3-1.8
	60	--	--	--	--	0.2-0.3	0.2-0.3	0.2-0.3	0.2-0.4	0.5-0.8
	70	--	--	--	--	--	0.2-0.3	0.2-0.35	0.2-0.4	--
	80	--	--	--	--	--	--	0.2-0.3	0.2-0.4	--
90	--	--	--	--	--	--	--	0.2-0.3	--	

TECHNICAL SPECIFICATIONS

Material	Thickness	2000W	3000W	4000W	6000W	8000W	12000W	15000W	20000W	30000W	
		Cutting Speed (m/min)									
Carbon Steel (Oxygen)	1	15-25	20-38	35-45	42-55	48-65	60-85	70-100	55-65	60-70	
	2	7-10	10-18	13-24	15-25	25-48	30-40	40-55	33-45	40-55	
	3	4.0-6.0	6.0-8.0	7.0-13	15-25	20-33	30-40	35-45	25-35	40-55	
	4	2.0-3.0	3.5-5.0	4.0-6.5	9.5-12	13-18	20-30	30-40	15-25	38-50	
	5	1.2-1.8	2.5-3.5	3.0-4.5	5.0-8.0	9.0-12	15-25	20-30	13-20	38-45	
	6	0.7-1.0	1.5-2.5	2.0-3.5	3.8-5.0	4.5-8.0	10-15	15-24	9.0-12	25-35	
	8	0.6-0.8	0.7-1.0	0.9-1.6	2.0-2.5	4.0-5.5	7.0-12	8.0-12.0	4.5-6.5	20-30	
	10	--	0.4-0.7	0.6-1.2	1.0-1.5	2.2-3.0	4.5-6.0	6.0-10.0	2.8-4.0	15-24	
	12	--	--	0.4-0.6	0.8-1.0	1.5-1.8	4.0-6.0	4.0-6.0	1.9-2.5	13-20	
	16	--	--	--	0.5-0.8	1.0-1.6	1.5-2.5	2.0-3.0	1.5-2.0	10-15	
	20	--	--	--	--	0.7-1.0	0.9-1.5	1.3-1.8	0.8-1.2	9.0-12	
	30	--	--	--	--	--	0.3-0.8	0.5-1.0	0.3-0.7	6.0-10.0	
	40	--	--	--	--	--	0.2-0.4	0.2-0.5	0.3-0.5	4.0-6.0	
	50	--	--	--	--	--	0.1-0.2	0.3-0.7	0.2-0.4	2.0-3.0	
	60	--	--	--	--	--	--	0.2-0.5	0.2-0.3	1.3-1.8	
	70	--	--	--	--	--	--	--	0.1-0.2	0.3-0.8	
	80	--	--	--	--	--	--	--	--	0.2-0.3	
	Aluminum (Nitrogen)	1	10-16	20-35	25-35	35-45	40-65	50-80	55-65	75-85	78-88
		2	5.0-6.0	6.0-10	8.0-12	20-30	28-40	33-40	38-50	40-55	55-65
3		2.5-4.0	4.0-6.0	5.0-8.0	12-18	18-30	15-23	20-30	32-50	40-55	
4		2.0-3.0	3.0-5.0	3.2-5.5	5.0-8.0	10-15	10-16	15-20	27-35	38-50	
5		0.9-1.2	1.5-2.0	2.0-3.0	4.5-6.0	6.0-9.0	9.0-13	10-15	18-26	33-40	
6		0.4-0.7	1.0-1.8	1.4-2.0	3.0-4.5	4.5-6.5	7.0-9.0	6.0-8.0	10-18	20-30	
8		0.3-0.5	0.5-0.7	0.7-1.2	1.6-2.2	2.4-4.0	4.5-6.5	5.0-7.0	8.0-10.0	18-26	
10		--	0.3-0.5	0.5-1.0	0.8-1.2	1.5-2.2	2.4-4.0	4.5-6.5	5.0-7.0	10-15	
12		--	--	0.3-0.8	0.3-0.5	0.8-1.2	1.5-2.2	2.4-4.0	2.8-4.2	5.0-7.0	
14		--	--	--	0.3-0.4	0.4-0.6	0.6-1.2	0.8-1.5	1.0-1.8	2.4-4.0	
16		--	--	--	0.2-0.3	0.3-0.5	0.4-0.6	0.6-1.2	0.8-1.5	1.0-1.8	
18		--	--	--	--	0.3-0.4	0.3-0.5	0.4-0.6	0.6-0.8	0.8-1.5	
20		--	--	--	--	0.2-0.3	0.3-0.4	0.3-0.5	0.4-0.6	0.6-1.2	
30		--	--	--	--	--	0.2-0.3	0.3-0.4	0.3-0.5	0.4-0.6	
40		--	--	--	--	--	--	0.2-0.4	0.3-0.4	0.4-0.6	
35		--	--	--	--	--	--	0.1-0.3	0.2-0.3	0.3-0.4	
45		--	--	--	--	--	--	--	0.2-0.3	0.2-0.3	
40		--	--	--	--	--	--	--	0.1-0.3	0.1-0.3	
50		--	--	--	--	--	--	--	--	0.1-0.3	
60	--	--	--	--	--	--	--	--	0.1-0.2		

HAPOND DIGITAL TECHNOLOGY SDN. BHD. (788546-V)

Tel : +603-4296 3733 Fax : +603-4296 9733

Email : sale@hapond.com.my || Website : www.hapond.com.my

Coordinates : N 03° 08.079' E 101° 45.79'



Address :
No. 21, 23, Jalan Bukit Permai Utama Tiga,
Taman Industri Bukit Permai,
56100 Cheras,
Wilayah Persekutuan Kuala Lumpur.